

# minēro

## Datasheets

### **COGITECH**

16 rue Marcel Sembat  
21 000 Dijon  
FRANCE  
+ 33 3 80 28 95 03  
[cogitech@cogitech.fr](mailto:cogitech@cogitech.fr)  
[www.cogitech.fr](http://www.cogitech.fr)



# The mineral mortar, a material for creation.

Over 20 years, Cogitech has transformed mineral materials and obtained the EPV label in 2014, a french distinction which recognizes excellence in craftsmanship, and which was renewed until 2024.

This label underlines the quality of our know-how which crosses tradition with technical innovation. We are a creative power committed to architects, designer and luxury brands.

Minero harnesses cutting-edge technologies and mobilizes a range of specialty competencies from our team, from engineers, lacquerers, composite specialists, plaster staffors and modellers to designers around your projects. Everyone at Cogitech shares technical skills and artistic sensibility.

---



Minero Light - Panneau décoratif dessiné par RDAI.







# minēro Block

Reinforced decorative mortar

## Technical data

Water mortar sprayed with fiberglass allowing to produce durable outdoor pieces.  
It can be shaped by casting or carving.



*Thickness*  
10 - 15 mm



*Fire resistance*  
A1 (EN998-1:2016)



*Weight in kg/m<sup>2</sup>*  
16 - 24



*Application*  
Indoor and outdoor



*Composition*  
Mortar and fiberglass reinforcement



*Fastening*  
Bonding / Screw fastening / Fastening on frame



*Shaping*  
Drilling / Cutting with diamond tools



Project "Geste" for Manufacture XXI.



# minēro

## Block

Reinforced decorative mortar

### Finishes\*

Moulded or stamped textures, spun-dyed, patinas and varnishes.



Project "Luo" for Manufacture XXI.



Project "Luo" for Manufacture XXI.

*\* Other finishes available on request.*

minēro

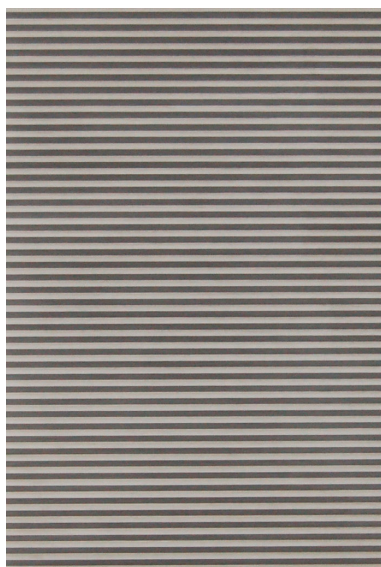
# minēro

## Light

Mineral plaster reinforced with mineral composite.

### Technical data

Mineral composite with a recycled mortar basis. It can be combined with fiberglass or natural fibers. Specifically formulated to be highly efficient in very thin layer.



*Thickness*  
3 - 5 mm



*Fire resistance*  
B1 (DIN4102-1 may1998) M1



*Weight in kg/m<sup>2</sup>*  
6.5



*Application*  
Indoor



*Composition*  
Cement-based coating



*Fastening*  
Bonding



*Shaping*  
Drilling / Cutting with diamond tools





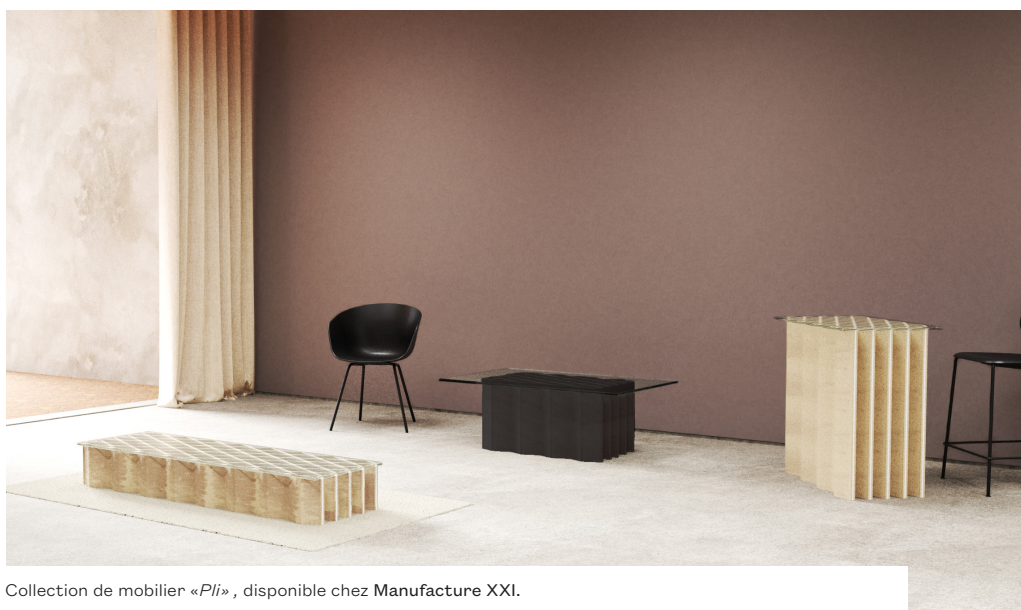
# minēro

## Light

Mineral plaster reinforced with mineral composite.

### Finishes\*

Moulded textures, spun-dyed, patinas and varnishes.



Collection de mobilier «Pli», disponible chez Manufacture XXI.



Collection de mobilier «Pli», disponible chez Manufacture XXI.

*\* Other finishes available on request.*

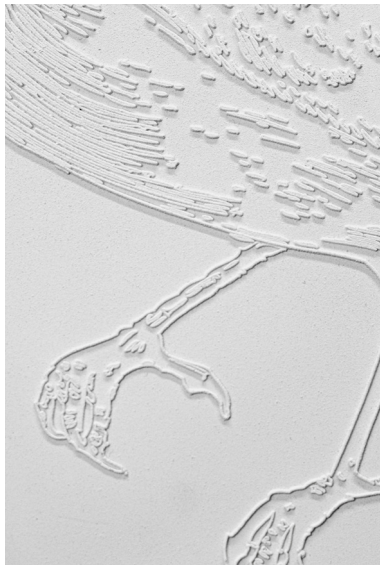
# minēro

## Pure

High-hardness reinforced plaster.

### Technical data

Plaster-based mineral composite reinforced with fiberglass or natural fibers. Can be casted or modeled. Depending on the expected qualities, different types of plaster can be used.



*Thickness*  
5 - 10 mm



*Fire resistance*  
A1



*Weight in kg/m<sup>2</sup>*  
9 - 18



*Application*  
Indoor



*Composition*  
Alpha plaster and fiberglass



*Fastening*  
Bonding / Screw fastening



*Shaping*  
Drilling / Cutting with diamond tools





# minēro

## Pure

High-hardness reinforced plaster.

## Finishes\*

Moulded textures, spun-dyed, patinas and varnishes.



Project "6.07pm, 2020" from Lebanese artist Najla El Zein.



"Fragmented pillar" serie from Najla El Zein.

\* Other finishes available on request.

minēro

# minēro

## Skin

Coating on any medium.

### Données techniques

Thin cement-based mortar that can coat any medium to give it mineral properties in surface (hardness, high scratching resistance). It can stick on a large range of medium without bonding primer. It can be used on floor and other surfaces exposed to water.



*Thickness*  
1 - 2 mm



*Fire resistance*  
A2 -s1



*Weight in kg/m<sup>2</sup>*  
1.5



*Application*  
Indoor



*Composition*  
Single-component cement-based.



*Fastening*  
directly applicable on wood, concrete, metal, terracotta, tiles.



*Shaping*  
Can be drilled and sanded after drying.





# minēro

## Skin

Coating on any medium.

### Finishes\*

Smooth or slightly textured mineral coating, patinated or not, spun-dyed.



*\* Other finishes available on request.*

minēro







minéro

# Studio Cogitech

Our design studio brings a creative look on materials and processes.

Through a practice of constant experimentation on materials and processes, the studio contributes creativity to your project at all stages of development. The studio designs decorative objects which illustrate future applications and potentials for our materials. This manufacturing process is fully documented in our workshop.

---

**STUDIO—  
COGITECH**



Minero Block - Project "LUO" design by Studio Cogitech for Manufacture XXI







*GESTE  
Retail composition*



*LUO  
Coffee table*



*LUO  
Various compositions*





*PLI  
Desk*



*PLI  
High counter*



*MINERO  
Lacquered sample*





# minéro

by

## COGITECH

16 rue Marcel Sembat

21 000 Dijon

FRANCE

+ 33 3 80 28 95 03

[cogitech@cogitech.fr](mailto:cogitech@cogitech.fr)

[www.cogitech.fr](http://www.cogitech.fr)





